

Jovan Milivojević

Research paper
DOI – 10.24874/QF.25.120



WHAT IS "ABOVE" THE MIND? – BASIC ENTITY OF EXISTENCE

Abstract: *In order to conduct a thought experiment on the research question: What is "above" the mind, it is necessary to consider the question of the mind itself. The basic paradigm of modern Western science starts from the concept of matter and the theory of evolution, so the source of mind is matter from which it emerges through the process of evolution. He also believes that the mind is exclusively a property of living matter, primarily humans and some animals that are high on the evolutionary ladder of living beings (primates, for example). Is this even true and isn't mind a property of all entities that exist in the visible/cognizable world? These two opposing viewpoints define a completely different understanding of the world and its essence. In the first case, the world was created out of chaos by evolution and from nothing (singularity), and in the second, the world is generated by the mind according to strict principles and is always constant. So, the research problem: what is "above" the mind? is possible only if the entire world is imbued with intelligence. Starting from the assumption that there is nothing finite in the structure of the world and reality and that an unlimited number of different creations are possible, then it is logical that the mind is not a limiting feature of the expression of the world and its reality. Just as we have (through the limited senses) the understanding of matter, energy and time, as well as the origin and disappearance of entities in time, and based on this "absolutely true" (through science and mathematics) proof of objective reality and "fundamental" laws, so we also have the much more logical and deeper truth that the world is organized by the mind and that its essence is the existence of information (ideas and creations) which in a timeless state ("bright emptiness") creates countless worlds and a temporal dimension (not from singularity) in order to express the creations themselves. If the mind is all-pervading then what is it that generates it, what is it that is "above" mind and information? What kind of natural phenomenon is it? This work is an attempt to initiate research into this phenomenon, with the fact that the essence of the mind itself and its role in the existence and being of the world must first be resolved.*

Keywords: *Mind, field of mind, what is "above" the mind?, "bright emptiness", understanding the essence of the world, information, creation, basic entity of existence.*

¹ Corresponding author: Jovan Milivojević
Email: jovan.milivojevic@gmail.com

1. Introduction

Research Question: What is "above" the mind? require performing a complex thought experiment. First of all, one should begin by exploring the essence and purpose of mind in all existence. Philosophers' interpretation of mind depends on philosophical schools and their understanding of reality and the world. Thus, the largest number of them are of the opinion that the mind is a feature of the living world, primarily of man as a thinking being. Recently, new theories have emerged, such as quantum mind, hologram mind, noetic theory, global mind, collective mind, etc. and corresponding experiments are carried out in parallel, which achieve pioneering steps in the investigation of the nature of the mind (Amoroso, n.d.). Only one thing is clear that the mind is not concentrated in the human brain, but also in other organs: heart, lungs, human cells and cells of the biome, which means that the human organism is permeated with intelligence, i.e. mind. Noetic research shows that human consciousness is connected to the Earth's ionosphere and that, most likely, two-way communication takes place, which indicates that our planet is an intelligent being. On the other hand, experiments have shown that photons communicate with each other and that each photon knows exactly the position of each entity in the universe, as well as a clear representation of the entities with which it interacts. Also, we should take into account the processes in the human organism in which there is a countless exchange of information between organism entities of different levels, DNA and RNA of both human cells and biome cells, with simultaneous communication with the external environment. All this is in favor of the existence of the human mind field with a very complex structure and its networking with all the intelligence of entities in its environment, both society and all entities in the universe (man is composed of atoms, photons, gravity, quantum of energy, etc.)

both living and "inanimate/dead" matter. It can be said with certainty that the infinite universe is intelligent, that is, there is a field of mind or, more precisely, a "global" network of mind fields, the essence, purpose and structure of which we do not understand. The existence of an all-pervading mind raises a logical question: And what is "above" the mind? What is it in which the mind "exists" and what generates it, that is, determines its essence, purpose and structure? In this paper, some first steps will be taken in hypothesizing a natural phenomenon: that which is "above" the mind.

2. Understanding the human mind

Philosophers from antiquity to the present have mainly dealt with the question of the mind and its understanding. In the last two centuries, this question has been taken up by medicine, which intensively studies the brain, its function and importance for the mental health of a person, with an attempt to reach the secret of the mind, which according to them is in the brain. Psychology joins them in this research work (Metcalf & Son, 2011). Today, other scientific fields such as biology, genetics, physics, chemistry/biochemistry, noetic, etc. are also involved in solving the question of the mind (Lutz & Thompson, 2003). This is how completely new theories of understanding the mind are born.

2.1. Philosophical interpretation

Philosophy studies the nature of the mind, its functions, and the relationship between mind and body. Two schools, dualism and monism, were formed that try to solve the mind-body relationship (Institute of Noetic Sciences, 1995). Dualism is the view that mind and body are fundamentally separate from each other (Amoroso, 2012). Monism asserts that mind and body are not ontologically different kinds of entities.

Contemporary analytic philosophy views mind mainly as the traditional content of critical and idealistic theory (Hantla, 2014). Here we are always talking about a unique human action, so we can only talk about the mind in terms of meaningful ways of speaking. And of course, all this implies that we are talking about man as the only intelligent being.

2.2. The evolution of mind from matter

And the atom would, and a molecule is created and a molecule of living matter, simple microorganisms evolved, then complex organisms and primates evolved, and the primate stood up and man (*homo sapiens*) was born. This is, of course, a crude account of human evolution (Đapo, 2017). With the development of living beings, the brain also evolved, and with it the consciousness caused by survival in a hostile environment. No, this is not a criticism of evolutionism, but a simple example of the evolution of man and his mind. The brain and its intelligence continue to evolve through continuous learning and imitation. How was DNA created, naturally by evolution, and the universe evolved by itself. So, to conclude, the mind was created by evolution from dead matter and this is a solid argument according to this theory (Pitkanen, 2024). In the theory of neuropsychologist Donald Merlin, the evolution of the mind takes place through three main transitions, from the episodic, characteristic of primates, to the theoretical, exclusive only to modern humans. Of course, this is still a valid scientific truth, fully cemented and firmly embodied

2.3. The Mind as a Hologram

It is based on the hypothesis that the entire reality is a hologram by nature. A hologram is recognized when one part of the image contains the whole. One pixel is encoded with the information of the entire image. The universe can be represented as a super

hologram. Bohm says that we have no way of knowing what else lies hidden in this super hologram and perhaps this super holographic level of reality is just one stage behind which lies an infinite potential for further development. While Pribram came to the conclusion that the brain itself is a hologram. He believes that the brain also represents a kind of lens that uses hologram principles when it mathematically transforms the vibrations received through the senses - into the inner world of our perception (Korala, 2020). At the same time, a large amount of evidence suggests that the brain uses hologram principles when performing its function.

Pribram's hologram model is most surprising when it is connected to Bohm's theory. Because if the "solidity" of the world is only its secondary property, and what is there is, in fact, only a "cloud" of frequencies, and if the brain is also only a hologram that only selects and sorts some of the vibrations from this cloud and mathematically transforms them into perception, then what is this - objective reality? (Stanford Encyclopedia of Philosophy, 2015)

The hologram paradigm also has implications in the so-called "hard" sciences such as biology. Keith Floyd, a psychologist, points out that if the materiality of reality is just a hologram illusion, then we can no longer even say that it is the brain that creates consciousness. Rather, it could be argued that consciousness creates the shape of the brain - as well as the body and everything else around us that we interpret as material.

Although today's science is unable to explain supernatural events, experiences like this become much clearer if material reality is just a holographic projection. Perhaps we agree on what is there and what is not, because what we call "consensus reality" is formulated and ratified at the level of human consciousness where all our minds are continuously intertwined. (Kauffman & Radin, 2021; Pitkanen, 2017)

2.4. Quantum Mind

How and when did the mind originate? We will start from three possibilities of the origin of the mind:

- 1) Mind emerged as a property of biological complexity at some point during evolution (Wahbeh et al., 2022).
- 2) Mind has always been the universe or God, as religious views suggest.
- 3) The precursor of mind has been in the universe all along with consciousness arising during evolution as quantum biomolecular processes in the brain connecting to the fine structure of space-time geometry (Berglund et al., 2022).

Considering all three possibilities, Stuart Hameroff defined the existence of the quantum mind.

Stuart Hameroff: There are three possibilities for the question of the origin of consciousness, I would say I prefer the last one, which actually kind of encompasses all three. I think the precursor to consciousness was throughout the universe, but then at some point we and the animals developed Orh-OR, or OR, abilities to have conscious moments that connect to the fine structure of space-time geometry. Which means that consciousness is indeed a self-organizing process at the fundamental level of the universe.

I would say that the precursors or components of consciousness, the proto qualia or proto qualia of consciousness, were the universe all together with the irreducible components of planck scale geometry, along with mass, spin, or charging/charge. They just came with the territory. Quantum processes in biology have evolved to best access and select proto-conscious precursors, so we do it better than less evolved animals, I would say. And consciousness as a process is rooted in the fundamental geometry of space-time and plausibly allows for non-local conscious awareness and spirituality,

and something like a quantum soul. (Hameroff, 2011; Kauffman & Radin, 2021; Klauder, 2022)

2.5. Buddhist view of the nature of mind

According to our great traditional wisdom the phenomena arising from this vast unbroken whole, our primordial source (prajnaparamita, gzhi, kadag, cittadhatu, dharmakaya, dharmata, chos, niid, Tao, Ein Soph) which is the perfectly subjective Ultimate Reality, the Consciousness of Being Alone, the Absolute Spirit, over time develops self-awareness and then presence witnessing or intelligence/consciousness (vidya, rigpa) which recognizes the fundamental non-local, interdependent interconnected prior unity, while remaining in a relationship of identity with all parts. This is the process of the Platonic "eternal return" to nondual Spirit. All created spatio-temporal phenomena participate in the "primordial purity" (kadag) of this vast base of consciousness (gzhi), this primordial wisdom of awareness (gnosis/jnana/jeshe) whose spontaneous presence (lhundrub) resides in all things and beings. Thus, while one obtains a "spatial separation" from the participating parts of an unbroken whole, there can be no essential separation from this vast primordial nondual void, openness, or unity (longchen, svabhava), this ontically prior unity which is the basis or source of all that arises within it.

Without past, present, future; empty waking mind. – Minham Rinpoche.

Nagarjuna says that things and events that dependently arise are empty, and therefore dependently marked. He concludes: there is nothing that is not empty, because there is nothing that is not dependent created. Here we see the equation between dependent origination and emptiness – a middle way that transcends the extremes of absolutism and nihilism. - H.H. Dalai Lama, Buddhadharma.

How then do phenomena exist? The world is real, not on its own, but only through nominal, perceptual and conceptual relative interobjective and intersubjective conventional imputation and marking, cognitive acts of sensory perceptual and conceptual living nervous systems. Kant, Wittgenstein, Quine, Habermas, Wallace and Wilber translated this wisdom of ontological relativity for the West. According to Buddhist scholar-practitioner and philosopher of science Alan Wallace, this "intersubjectivity lies at the very heart of the Buddhist worldview and its path to spiritual awakening." Buddhist soteriology sees the individual not as an independent ego, but as a dependent self—our relative spatiotemporal mind—emerging as a process of interdependent being out of a vast luminous void, an infinite causal connection or matrix of prior causes and conditions. In this holistic view of the ego's middle path, it exists, as with all phenomena, not permanently or absolutely, but only nominally and relatively, through its own cognition, namely conceptual imputation and marking. So far we have given the epithet "ontological relativity" to this process. Ultimately, however, all phenomena of reality are "empty of their own nature," completely devoid of any trace of essential or inner existence. Therefore, there is no inherent existence neither in being itself, nor in non-being, nor in the space-time dimension. (Boaz, 2011)

3. Field of mind

The latest research in many fields of science increasingly indicates that entities and nature as a whole have a fractal structure: this is how photons, atoms, DNA and RNA, cells, the human brain, matter in space are organized. Fractals are infinitely complex shapes created based on simple rules. If we observe the nature around us, it becomes clear that the universe has a fractal shape. Mountains, trees, coastlines, river basins and every other surface on the planet is not

smooth, but fractal. Perfect smoothness is imaginary and does not exist in reality. This is logical because everything in nature vibrates. A fractal is infinitely complex at every level of existence or organization. No matter how much we zoom in on the fractal we always see an infinite level of detail. That the whole world is of a fractal nature is shown by a large number of researches that have been conducted or are being conducted in the world, from the level of atoms and molecules to the level of galaxies and clusters of galaxies and all the way to space. Also, man as an entity of the universe is built of fractal structures, which can be seen in the geometry of the vascular and respiratory system, as well as the organization of neurons in the brain (Figures 1 and 2).

And finally we have the fractal structure of organizing energy and matter on a large scale in the universe. This can be clearly seen from the fractal distribution of galaxies, Figure 3.

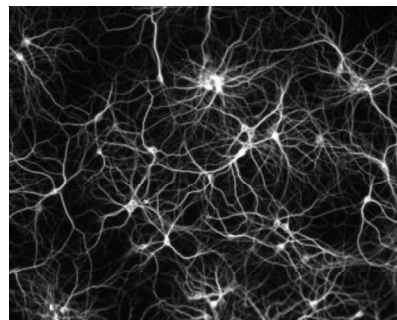


Figure 1. Fractal structure of neuron

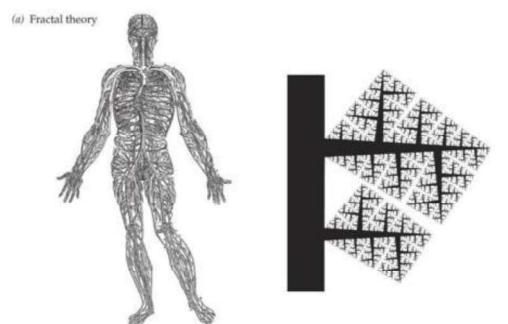


Figure 2. Fractal geometry of vascular and respiratory system

And finally we have the fractal structure of organizing energy and matter on a large scale in the universe. This can be clearly seen from the fractal distribution of galaxies, Figure 3. Fractal geometry of vascular and respiratory system.

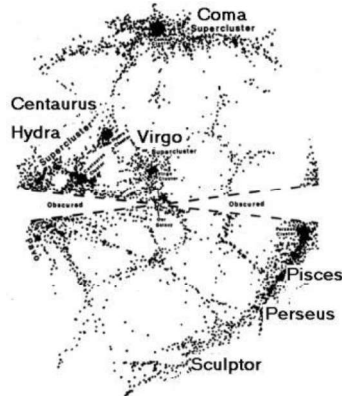


Figure 3. Fractal distribution of galaxies

If both the micro and macro world, as well as man, have a fractal structure, then it is logical that the human brain and his mind are organized according to the same principle. The human brain has a fractal neural network (Figure 1), which consists of about 100 billion neurons, each of which is connected, on average, to about 7000 others via synapses. As we know, neurons are cells that receive, process and transmit information, while synapses are connections between neurons through which messages are transmitted through chemical and electrical processes. All the neurons in our brain are constantly communicating with each other and thus keep the brain functioning (all aspects of mind and thinking). The human population is like a neural network, that is, a global human network (Schlitz et al., 2010; Erdogan et al., 2022). More than 8.0 billion people move and communicate with each other. Each of us is connected to thousands of people, is in constant contact and constantly exchanges information, energy, emotions, objects, etc. All this shows that we are entities of the planetary field of mind, that is, of the global

human network. This network is in communication with galaxies in space, which build another fractal "neural" network on much larger scales of space and time. More precisely, each galaxy has its own field of mind, but also several fields of mind within itself. If we apply the previous analysis to infinity, we will come to know that the universe is human and possesses the highest intelligence. The universe consists of uncountable sets of mind fields and as such organizes energy and matter, but also an immense number of other entities and actions that are not and will not be known to man.

On the other hand, the mind is quantum in nature. Quantum physics, or rather quantum mechanics, explores the universe at the subatomic level, that is, the essential properties of the infinite space-time continuum. She investigates the structure and behavior of electrons, photons and other elementary particles, and in the process she has come up with very unusual and beautiful things about the universe. One of those things is the discovery that thoughts affect the subatomic particles that are being observed and thus affect the outcome of the experiment (Radin, 2006). The universe we know seems objective and separate from us, it exists as such because we imagine it that way and it is continuously created that way. The natural state of the universe is unlimited potential and remains so until our mind engages it, whereupon it forms into the reality we perceive and experience. Our expectations of the future cause the universe to organize itself in the shape of those expectations. Quantum mechanics has shown that our entire perception of reality is produced by our minds. We live in the world of thought, which is part of the thought of the universe, in other words our mind is part of the field of mind that organizes all kinds of energy and matter and entities still unknown to us.

The nature of the universal field is vibration. Vibration is movement, and movement is energy, and that's why energy is everywhere

because everything vibrates. And our body is energy, because matter is energy (Einstein's relation) (McFadden, 2023). Hence, it is impossible to define the body as an object separated from the universe. All elements (oxygen, etc.) that enter and leave (air, water, food) from our body continuously belong to our body and our planet at the same time. Thus, our body continuously absorbs and emits thermal energy, which is both ours and the sun's. Light, or photons, is in continuous interaction with our eyes and our skin and is simultaneously part of our body, part of the sun, stars and galaxies. This also applies to all other radiations, visible and invisible. We are created from matter and light with constant renewal and growth of cells from energy, which we absorb from the environment, so we cannot be separated from it. Everything around us is energy and atoms, protons, electrons, quarks, and other yet unknown elementary particles. It is all field and all energy and all mind. Our body is only a part of our all-encompassing mind or more precisely a part of the field of mind that organizes it. It is that part of the mind that is condensed to the slow vibration of energy (matter) in order to experience the sensation of the material. Energy continuously flows through our bodies and is shaped by the mind according to a set pattern (DNA - product of the mind field). Our bodies are not a permanent, fixed object, they are always in a state of change, and in accordance with the vibration of the universal field and the scheme determined by the mind field, which also undergoes changes (gene mutations). If we were able to see the energy that surrounds our bodies and is constantly flowing in and out of it, then we would be clear about the continuous interweaving with the universe.

From the previous analysis, it can be concluded that our mind has a fractal and quantum nature and that it is part of the network of the entire mind field of the universe (Amoroso, n.d.). This knowledge is extremely important for organizing human networks.

Human networks and interaction with the mind field. In order to determine the interaction of the human network with the field of mind, we will start from the entity of the network (man) and his mind. Our subconscious has countless layers. On the deepest layer is the field of the mind of the universe, shallower are the layers of the mind of the lower entities of the organization of nature. The shallowest layer is the planetary mind with which the human network interacts most strongly.

The mental field of our planet is an extremely important layer of our subconscious, because it is common to everything that lives on it. Although we are connected to the entire universe through the deepest layer, our relationship with the Earth is much stronger, because we are a part of it. The mind field of our planet is known as the collective or global consciousness (Kenny, 2004).

Our understanding of space is distorted because we project multidimensional information into three-dimensional space. That distorted perception leads to dysfunctional thinking and causes disharmony and suffering. The interaction of the human network with the field(s) of the mind is based on the following facts:

- Everything is mind, consisting of quanta of mind.
- Mind is an all-pervading and all-pervading field (different from energy and matter)
- Everything in the universe is a field and is connected through the mind field
- There is no division into parts - it is only an illusion produced by the limitations of our senses, because they can only perceive a 3-dimensional projection of space.
- Everything outside us is a reflection of what is inside us.
- Our subconscious is a common one, which connects us all in the field of mind and enables telepathy and

other diverse phenomena (Radin, 2004).

- The earth is a living, intelligent being, just like the galaxies and the universe.
- We are all part of the mind of the Earth, which is part of the mind of our galaxy, which is part of the unified mind field of the universe.
- Our thoughts and emotions directly affect the entire universe (Nelson et al., 2002).
- The mind causes the universe to form into the shape it imagines.

The universe is a network of mind fields that are in constant communication, interaction, and infinitely complex entanglement (Bernstein, 2005). As we have seen, the mind field of the human network interacts directly with the planetary mind field, and through the deepest layer of the subconscious with the unique mind field of the universe.

4. What is "above" the mind?

4.1. What is it that contains, pervades and generates the mind?

Question: What is "above" the mind? it makes sense only for the hypothesis of the mind field and to some extent for the hypotheses of the quantum mind, the hologram mind and the Buddhist view of the nature of the mind (bright void, pure mind, empty waking mind) because the mind field implies that the mind is an widespread and all-pervading phenomenon of the universe or existence (perceived and non-perceived), regardless of the types of reality. Logical thinking indicates that the mind is not the last or starting entity of existence: the variety and depth of the structure of the world is immeasurable and the question: what is it? it is always relevant, not only in science (Torres-Heredia Julca, 2007). And the question itself: what is "above" the mind? suggests that the world and the human being

permeate even more "subtle" structures of the world with new and unexpected properties and phenomena. Man feels all this at a deeper level than the mind and its actions. But here we have a big problem of expressing and describing new entities and phenomena due to the weak development of language, both conceptual and perceptual, as well as the largely imperfect mathematical apparatus prone to averaging, as well as initial errors in mathematical axioms and inaccurate perceptions that are the basis for further development of mathematical structure and calculations. But, if we start from the fact that all of this approximately expresses the truth, as well as our insufficiently developed logic, we can arrive at at least approximately correct answers to the question posed. So it can be said that:

- mind (pure mind, empty waking mind) contained in some more refined structure than itself,
- that the mind is imbued with something that has the potential to act on it out of time, because time is a product of the action of the mind,
- it is something that generates the mind, and with it all other phenomena of our reality (Deli, 2016).

Of course, in these claims, the problem of temporal expression of the problem and the answer to it is due to the nature of our imperfect language and imperfect logical concepts. But it is worth trying in anticipation of a radical advance in our structure of description, expression and perception: new language, symbolism and symbolic structures.

The essence of the "dwelling" of the mind - the "new ether".

4.2. The essence of the "dwelling" of the mind - the "new ether"

That something which contains and generates the mind (the field of mind, the pure mind, the bright void, the empty waking

mind) can tentatively be called the essence of the "dwelling" of the mind or the "new ether". So we can now think about the essential and functional relationship between the mind and the "new ether". On the other hand, we must investigate what it is that enables the human being to perceive this new structure of the world, what is the "sense" that is directed at this entity ("the new ether"). Only when we determine with which own structure we are connected to this entity can we develop scientific instruments and methods for its study and measurement (Sosteric, 2005). But we are only at the beginning of the study of the phenomenon of the mind, and a lot of work and effort awaits us in order to reach its essence and purpose in the world, that is, its reality. Only after significant achievements in the field of mind research will we be able to start with research: what is "above" the mind?, which will enable new breakthroughs in knowledge and new technological development based on completely new principles and phenomena of the nature that surrounds us.

5. Conclusions

This work is an attempt to break into the new structure of the world, starting from the fact that the mind is a phenomenon that is all-pervasive and widespread in the entire organization, that is, the existence of the world, no matter how it manifests itself

(universe, parallel universes), and that as such it is contained in something more refined than itself. In fact, we need to find an answer to the research problem: what is "above" the mind?. This question is only possible when the mind is expressed as a mind field or a network of mind fields (pure mind, bright emptiness, empty waking mind). In that case, it can be concluded that:

- mind (pure mind, empty waking mind) contained in some more refined structure than itself (Pitkanen, n.d.),
- that the mind is imbued with something that has the potential to act on it out of time, because time is a product of the action of the mind,
- it is something that generates the mind, and with it all other phenomena of our reality.

That something which contains and generates the mind can tentatively be called the essence of the "dwelling" of the mind or the "new ether". At the same time, it should be borne in mind that it is necessary to first make breakthroughs in the theory of mind through an intensive study of its nature (essence), purpose and actions, as well as its structure and connection in the entire cognitive and noncognitive world (Boaz, 2011). Only after that should we start with scientific research on the question: what is "above" the mind?

References:

- Amoroso, R. L. (2012). Physical parameters of mind-body interaction: Breaking the 1st person 3rd person barrier. *Journal of Nonlocality*, 1(1).
- Amoroso, R. L. (n.d.). *An introduction to noetic field theory: The quantization of mind*. The International Noetic University.
- Amoroso, R. L. (n.d.). *The physical basis of consciousness: Implications for noetic medicine and transpersonal psychology*. Noetic Advanced Studies Institute.
- Berglund, P., Hübsch, T., Mattingly, D., & Minic, D. (2022). Gravitizing the quantum. *Essay written for the Gravity Research Foundation*.

- Bernstein, P. (2005). Intuition: What science says (so far) about how and why intuition works. In R. Buccheri et al. (Eds.), *Endophysics, time, quantum and the subjective* (pp. unknown). World Scientific Publishing.
- Boaz, D. P. (2011). *The noetic revolution: Toward an integral science of matter, mind and spirit*. Copper Mountain Institute.
- Deli, E. (2016). Consciousness, a cosmic phenomenon—A hypothesis. *Institute for Consciousness Research*.
- Đapo, N. (2017). *Evolucija inteligencije čovjeka*. Filozofski fakultet Univerziteta u Sarajevu.
- Erdogan, E., Dignum, F., Verbrugge, R., & Yolum, P. (2022). Abstracting minds: Computational theory of mind for human-agent collaboration. *Utrecht University*.
- Hameroff, S. (2011). The quantum mind. *Pensamiento*, 67(254), 641–659.
- Hantla, B. F. (2014). Noetic sanctification: Using critical thinking to facilitate sanctification of the mind. *Christian Perspectives in Education*, 7(1).
- Institute of Noetic Sciences. (1995). A dyadic model of consciousness. *Institute of Noetic Sciences*.
- Kauffman, S., & Radin, D. (2021). Is the brain-mind quantum? A theoretical proposal with supporting evidence. *University of Pennsylvania*.
- Kenny, R. (2004). What can science tell us about collective consciousness? *MBA*.
- Klauder, J. R. (2022). Quantum field theory deserves extra help. *Journal of High Energy Physics, Gravitation and Cosmology*, 8, 265–268. <https://doi.org/10.4236/jhepgc.2022.82020>
- Korala, A. (2020). From visual perception, and towards a theory of consciousness. *Unpublished manuscript*.
- Lutz, A., & Thompson, E. (2003). Neurophenomenology: Integrating subjective experience and brain dynamics in the neuroscience of consciousness. *Journal of Consciousness Studies*, 10(9–10), 31–52.
- McFadden, J. (2023). Consciousness: Matter or EMF? *Frontiers in Human Neuroscience*. <https://doi.org/10.3389/fnhum.2022.1024934>
- Metcalfe, J., & Son, L. (2011). Anoetic, noetic and auto-noetic metacognition. *Columbia University*.
- Nelson, R. D., Radin, D. I., Shoup, R., & Bancel, P. A. (2002). Correlations of continuous random data with major world events. *Department of Mechanical and Aerospace Engineering, Princeton University*.
- Pitkanen, M. (2017). TGD universe as a conscious hologram. *Unpublished manuscript*.
- Pitkanen, M. (2024). Evolution in TGD universe. *Unpublished manuscript*.
- Pitkanen, M. (n.d.). TGD inspired theory of consciousness. *Unpublished manuscript*.
- Radin, D. (2006). Experiments testing models of mind-matter interaction. *Journal of Scientific Exploration*, 20(3), 375–401.
- Radin, D. I. (2004). Event-related electroencephalographic correlations between isolated human subjects. *The Journal of Alternative and Complementary Medicine*, 10(2), 315–323. <https://doi.org/10.1089/107555304323062346>
- Schlitz, M. M., Vieten, C., & Miller, E. M. (2010). Worldview transformation and the development of social consciousness. *Journal of Consciousness Studies*, 17(7–8), 18–36.

- Sosteric, M. (2005). The death of Newton: Consciousness, spirituality, and the second scientific revolution. *Electronic Journal of Sociology*.
- Stanford Encyclopedia of Philosophy. (2015). The problem of perception. *Stanford Encyclopedia of Philosophy*. <https://plato.stanford.edu/entries/perception-problem/>
- Torres-Heredia Julca, J. V. (2007). The generative holistic noetic theory. *HAL*. <https://hal.archives-ouvertes.fr/halshs-00150595>
- Wahbeh, H., Radin, D., Cannard, C., & Delorme, A. (2022). What if consciousness is not an emergent property of the brain? Observational and empirical challenges to materialistic models. *Consciousness Research*, 13.

Jovan Milivojević

Center of quality,

Faculty of Engineering

University of Kragujevac,

Serbia

jovan.milivojevic@gmail.com
